



# 1.0.0 User Manual

# Overview

kn0b CV Controller is a versatile performance to CV converter that gives you control over the back of the rack. The name is derived from the word knob and the computer hacker culture phenomenon of replacing the letter O with a zero. It provides an authentic knob turning experience by modelling a high quality audio potentiometer. The intuitive user interface has you creating CV in no time.

## Knobs Section



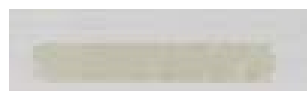
The Knobs section is where you'll find The Knob referred to by the name kn0b. The knob controls the level output from the CV output jack. The knob can turn from  $-120^\circ$  counterclockwise to  $120^\circ$  clockwise with  $0^\circ$  being straight up.

When in unipolar mode, turning the knob all the way counterclockwise, or left, results in a value of 0. And turning the knob all the way clockwise, or right, results in a value of 1. In between, the values range from 0 to 1 as the knob turns clockwise.

When in bipolar mode, turning the knob all the way counterclockwise, or left, results in a value of -1. And turning the knob all the way clockwise, or right, results in a value of 1. In between, the values range from -1 to 1 as the knob turns clockwise.

See the Switches section for how to select bipolar or unipolar behavior.

## Front Device Name



The Tape Strip can be used to give a unique and personal name to each kn0b device. It is recommended that this name be related to the CV parameter that the device is controlling, but it doesn't have to.

# Front Logos

## Left Side



The logos on the left side of the device alert you to the fact that this device is created by Blamsoft. And also that it is part of a family of products called the Tweaker Series.

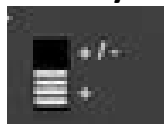
## Right Side



On the right side you will see that this device is called kn0b CV Controller.

# Switches

## Polarity



The polarity switch controls whether the CV output is both negative and positive or just positive. Set the switch to +/- for bipolar CV which ranges from -1 to 1. Set the switch to + for unipolar CV which ranges from 0 to 1.

## Quality



The quality switch can be used to control the CPU usage of the device. Due to SDK limitations, settings above 2 are not recommended for most computers. If you receive a Computer Too Slow to Play Song message you could try turning the quality setting down. Or you could leave it where it is or possibly turn it up higher, then create a thread on the forum about RE CPU usage.

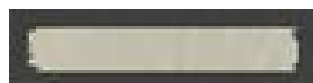
# Outputs

## CV Output



Connect a cable from the CV output to the device's CV input that you wish to control.

# Back Device Name



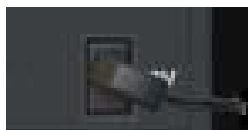
See Front Device Name

# Back Logos



The back logos are mostly either names of companies or products, or symbols that look like those on a piece of hardware. Don't be fooled, this is not actually a piece of hardware, it is a Rack Extension which is a type of audio plugin created by Propellerhead Software. Visit [www.propellerheads.se](http://www.propellerheads.se) for more information.

# Power Cord



This is actually fake. Sorry, you can't unplug it.

# Support

If you think you've encountered a bug in kn0b, do not contact [info@blamsoft.com](mailto:info@blamsoft.com), instead contact Propellerhead support and create a thread on the forum.